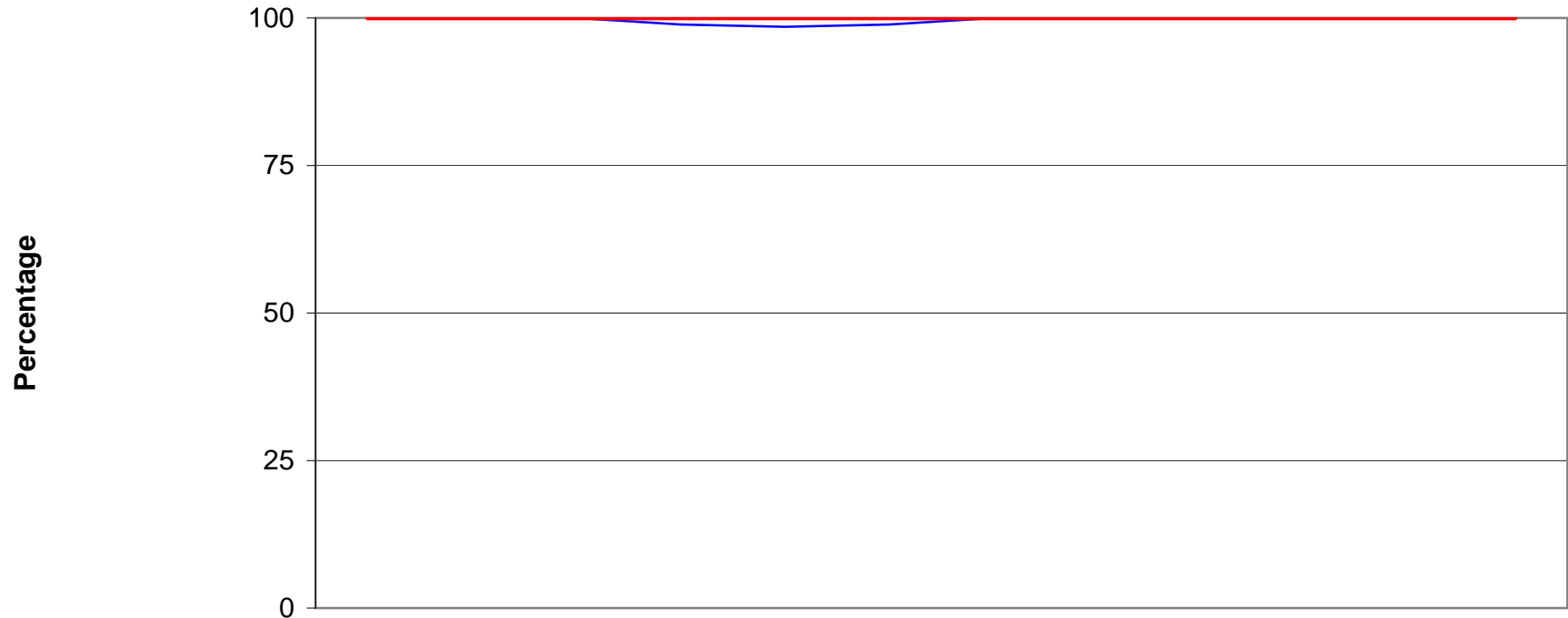


Collegewide Monthly Property Analysis
 (% of that month tangible moveable property added to Property Record < 30 days from ORION receipt) (PC 108A)
 Target 100%)



	Jan-07	Feb-07	Mar-07	Apr-07	May-07	Jun-07	Jul-07	Aug-07	Sep-07	Oct-07	Nov-07	Dec-07
# Items <= 30 Days	85	48	142	87	132	173	117	62	149	250	140	30
# Items > 31 Days	0	0	0	1	2	2	0	0	0	0	0	0
Total	85	48	142	88	134	175	117	62	149	250	140	30
— Target (%)	100	100	100	100	100	100	100	100	100	100	100	100
— % <+ 30 Days	100	100	100	98.9	98.5	98.9	100	100	100	100	100	100